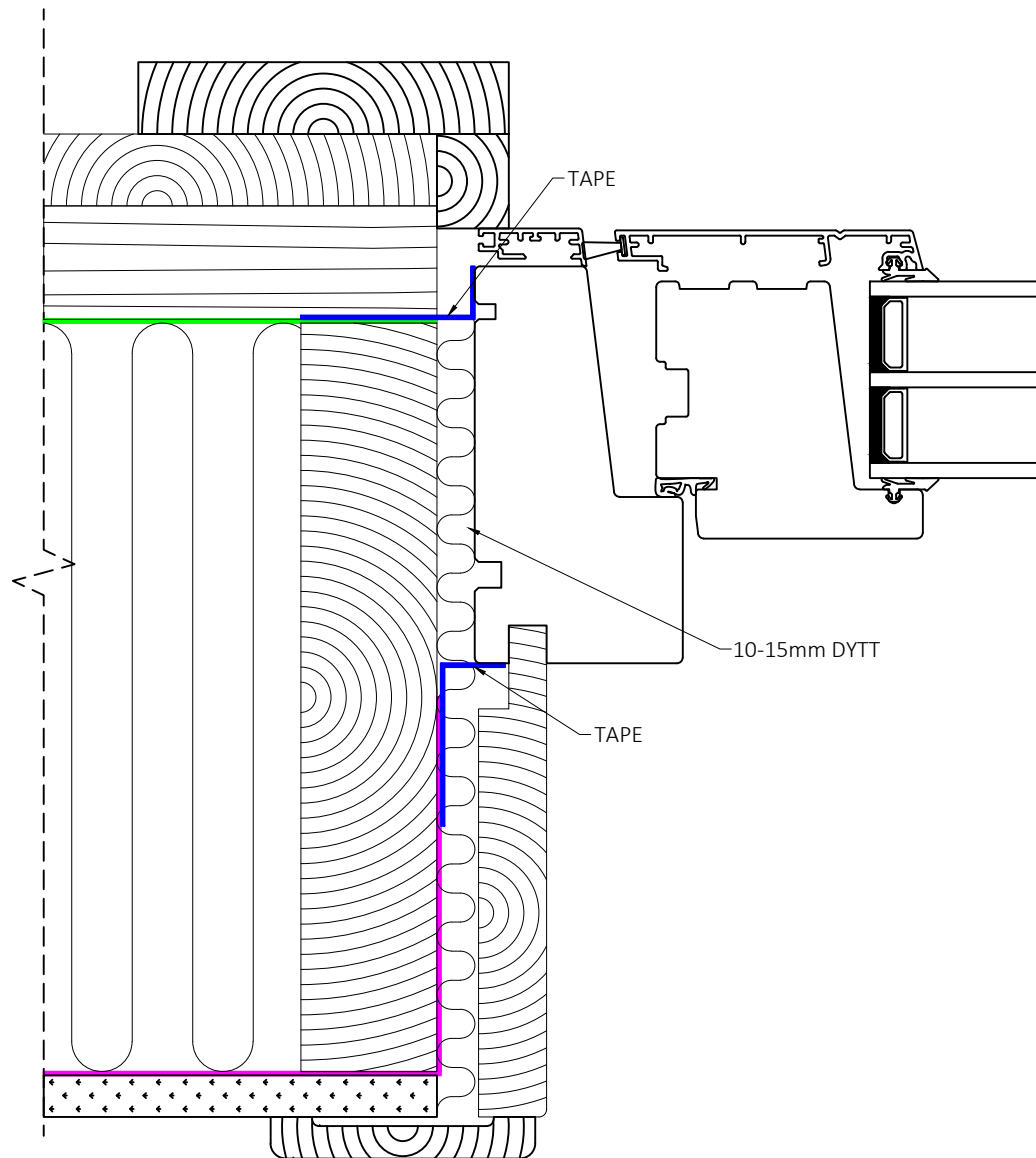


Date.	Design.	Approved.	Ver. no.	Rev. date.	Scale.	Tolerance. ±0,2mm. Any different are defined at drawing	Drawing no.
15.8.2024	KS	-	2	6.11.2025	1:2		BD Installation Stud-work wall V2

Natre Edge balkongdør utadslående tre/alu (tverrsnitt over)
Prinsippskisse montering i vegger av bindingsverk



Natre Vinduer AS
Engenvegen 1
2827 HUNNDALEN
NORWAY

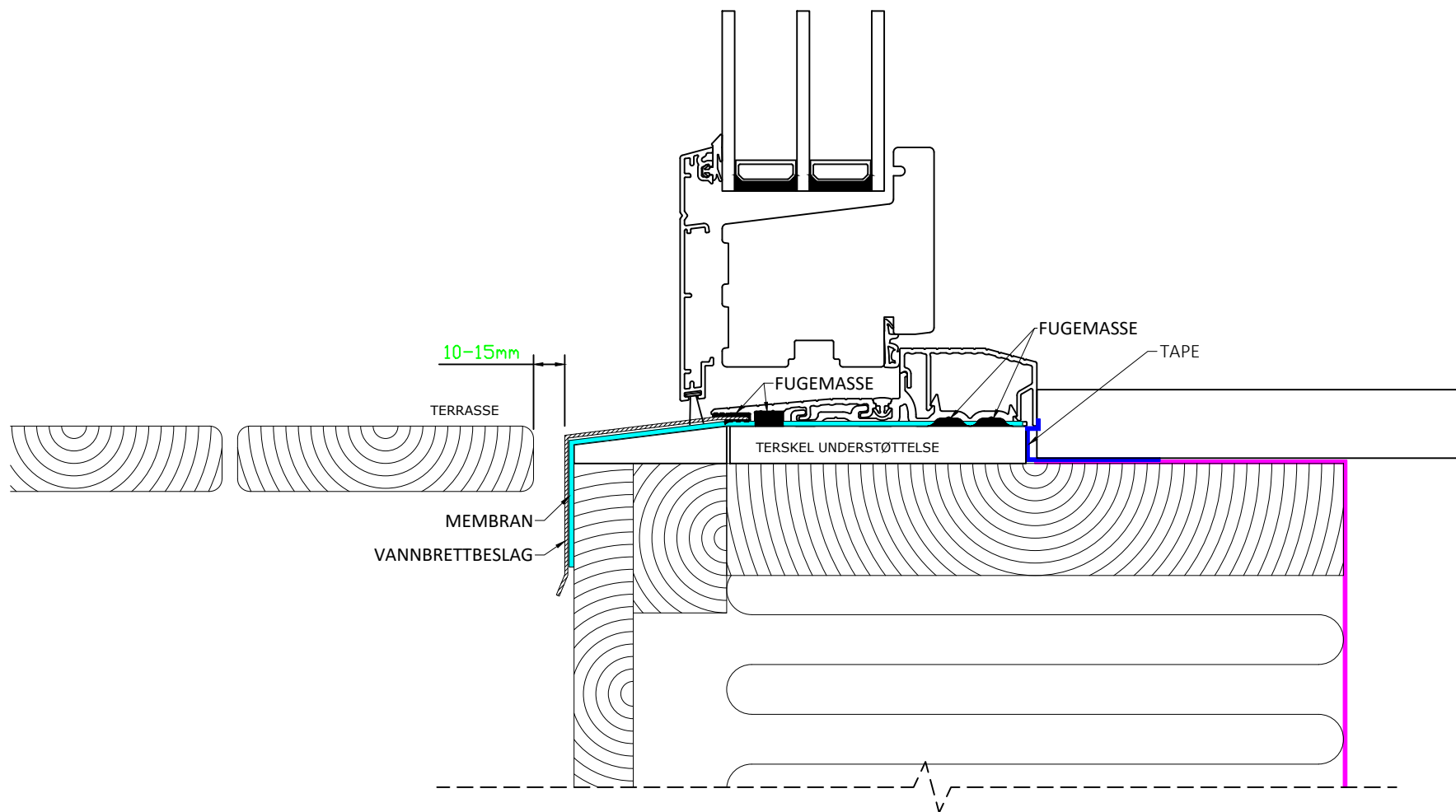


Date.	Design.	Approved.	Ver. no.	Rev. date.	Scale.	Tolerance. ±0,2mm. Any different are defined at drawing	Drawing no.
15.8.2024	KS	-	2	6.11.2025	1:2		BD Installation Stud-work wall V2

Natre Edge balkongdør utadslående tre/alu (tverrsnitt side)
Prinsippkisse montering i vegger av bindingsverk

natre
VINDUER

Natre Vinduer AS
Engenvegen 1
2827 HUNNDALEN
NORWAY



Date.	Design.	Approved.	Ver. no.	Rev. date.	Scale.	Tolerance. ±0,2mm. Any different are defined at drawing	Drawing no.
15.8.2024	KS	-	2	6.11.2025	1:2		BD Installation Stud-work wall V2

Natre Edge Balkongdør utadslående tre/alu (tverrsnitt under)
Prinsippkisse montering i vegger av bindingsverk



Natre Vinduer AS
Engenvegen 1
2827 HUNNDALEN
NORWAY